



VCC-HD2300/HD2300P
VCC-HD2100/HD2100P

Chapter 4

Working with Live Screen

Access the camera from your Web browser

Live Screen Components

Control panel

Tool panel

Access the camera from your Web browser

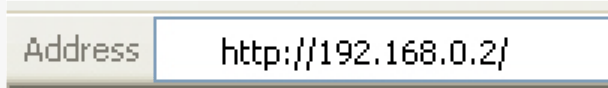
1 Start Internet Explorer.

The supported Web browser is Internet Explorer Ver.6.0 SP2 or higher, or Internet Explorer Ver.7.0.

2 In the address bar, type the IP address of the camera and press [Enter] key.

When you access the camera, the login screen appears.

If this is the first access to the camera, in the Address bar, enter the default IP address as follows.



Address http://192.168.0.2/



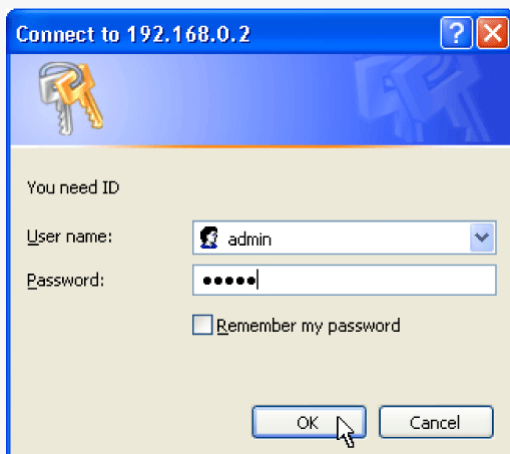
If you set [SSL] to "ON", before the IP address, type "https://" (instead of "http://").

Attempts to access the camera using the default IP address will fail if that address is already being used by another device in the network.

If so, change the IP address of the existing device before accessing the camera.

3 Type your user name and password and click **OK**.

The language selection screen appears.



Connect to 192.168.0.2

You need ID

User name: admin

Password:

☐ Remember my password

OK Cancel



If this is the first access to the camera, log in as an admin user (administrator) using the following default authentication information.

User name: admin, admin2, admin3

Password: admin, admin2, admin3

4 Click the button corresponding to the language you want to use.

The live screen appears.

From the second login onwards, the live screen appears automatically by skipping the language selection screen.



<Available languages>

► English, French, German, Spanish, Japanese



You can display the language selection screen by using the **LANGUAGE** button on the live screen control panel.

If this is the first access to the camera, configure the system clock on the CLOCK SETTINGS screen.

Accessing Two or More Cameras Simultaneously

You can access only one camera at a time from your Web browser.

To access two or more cameras from your PC simultaneously, use the following software.

Monitoring software “VA-SW3050Lite” (Supplied)

Installing this software adds to your PC the capability to simultaneously access two or more cameras and monitor live video from all connected cameras on a multi-view screen.

Recording software “VA-SW3050Server/Client” (Optional)

This software is higher-grade software than “VA-SW3050Lite” that adds recording and playback capabilities to your PC, in addition to video image monitoring.

This software requires at least two PCs that serve as the server and the client, respectively.

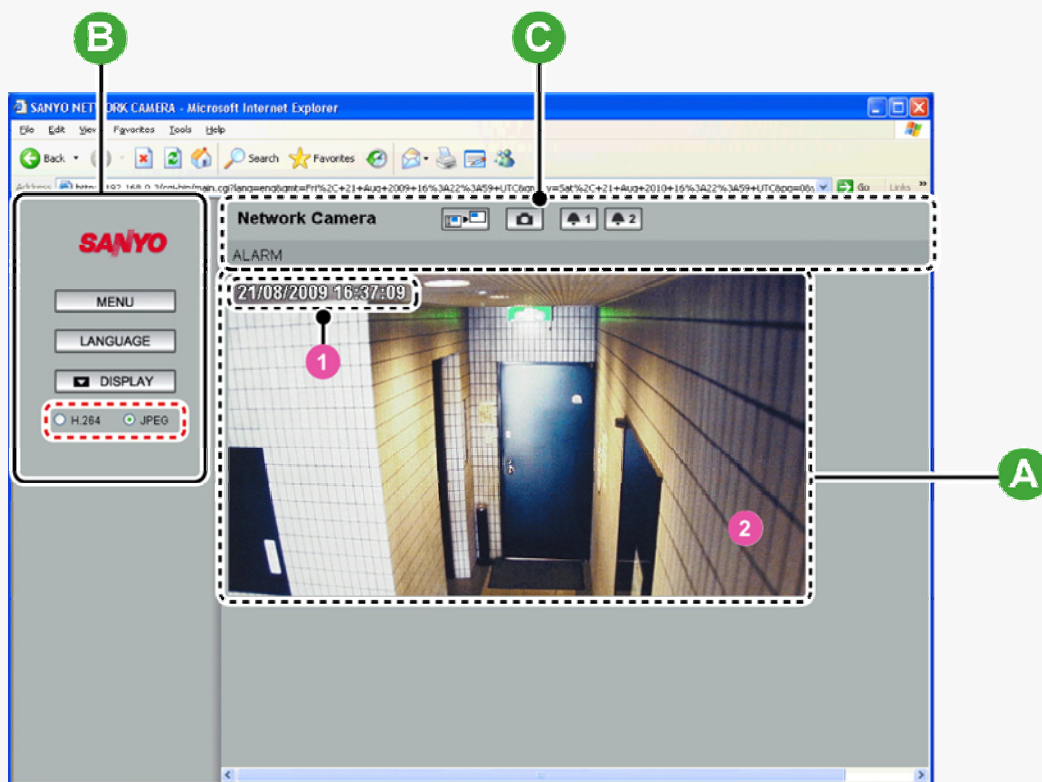
Live Screen Components

When you access and log into the camera successfully, the live screen appears.
For details, refer to the linked information.

Video display area (A)

Control Panel (B)

Tool Panel (C)



Video display area (A)

1 Current date and time

Shows the current date and time based on the clock settings configured on the CLOCK SETTINGS screen.



You may change the date-time format (month/day/year, year/month/day, or day/month/year), clock type, character size, and display position on the CLOCK SETTINGS screen.

2 Video/image display

Shows **JPEG** images or **H.264** video.

To switch the display, select the desired video/image display using the radio buttons on the live screen control panel.

Control panel

Click the desired button depending on the purpose of your operation. Then, the corresponding screen and panels will appear.

For details, refer to the linked information.

MENU : Click this to display the configuration menu.

LANGUAGE : Click this to display the language selection screen.

DISPLAY : Click this to display the display control panel.

Displaying Configuration Menu (MENU)

Click **MENU** on the control panel to display the configuration menu that includes a series of menu selection buttons.

Clicking one of these menu selection buttons displays the corresponding configuration screen.

If you are a surveillance system administrator, use these buttons to configure necessary settings according to the installation environment and application of your camera.



Required operation privilege: admin, operator ("admin" only for NETWORK SETTINGS screen)

Without the required operation privilege, you will be presented with an authentication check dialog box when you click **MENU** on the live screen. In this case, you cannot access the menu selection buttons until you enter an adequate user name and password.

Menu Selection Buttons

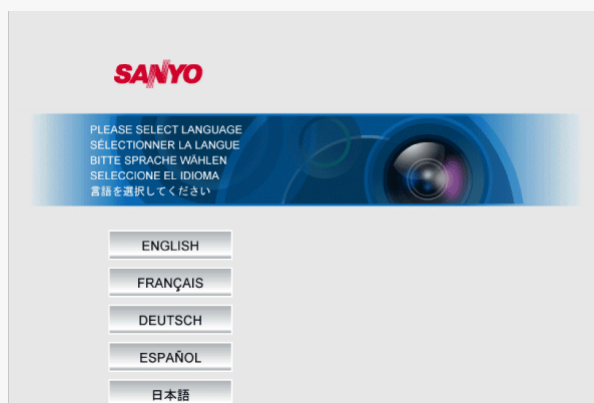
	Button	Configuration Screen (Menu)	Operation
1	NETWORK	NETWORK SETTINGS	Configure the network settings of the camera.
2	CLOCK	CLOCK SETTINGS	Configure the clock date/time, daylight saving mode, automatic clock adjustment, and other settings.
3	USER	USER SETTINGS	Configure the user authentication check at login.
4	CODEC/STREAMING	CODEC/STREAMING SETTINGS	Configure the conditions of the video/image transmission.
5	CAMERA	CAMERA SETTINGS	Configure the monitoring conditions and other settings according to the installation environment of the camera.
6	ALARM	ALARM SETTINGS	Configure the alarm input/output settings and the motion sensor function.
7	E-MAIL	E-MAIL SETTINGS	Configure the alarm notification e-mail function and other automatic transmission settings.
8	FTP	FTP SETTINGS	Configure the image streaming conditions if you intend to record images from the camera to an FTP server.
9	SECURITY	SECURITY SETTINGS	Configure the security settings for permitting or rejecting the access to the camera from up to 10 PCs.
10	OPTION	OPTION SETTINGS	Perform operations such as updating the firmware, restoring the factory defaults, and backing up and uploading settings.

Other Buttons

	Operation Buttons	Function
1	HELP	Provides an explanation of each function.
2	LIVE	Closes the configuration screen and returns to the live screen.

Language Selection (LANGUAGE)

Click **LANGUAGE** on the control panel to display the language selection screen.





► English, French, German, Spanish, Japanese

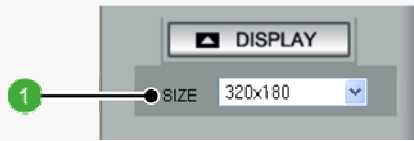


When the language selection screen appears, select the desired language within 10 seconds. Otherwise, you will be brought back to the live screen with the previous language setting.

Display Control Panel (DISPLAY)

Click **DISPLAY** on the control panel to bring up the display control panel.

- ▶ : Panel is minimized. Clicking the button opens the panel.
- ▶ : Clicking the button closes the panel.

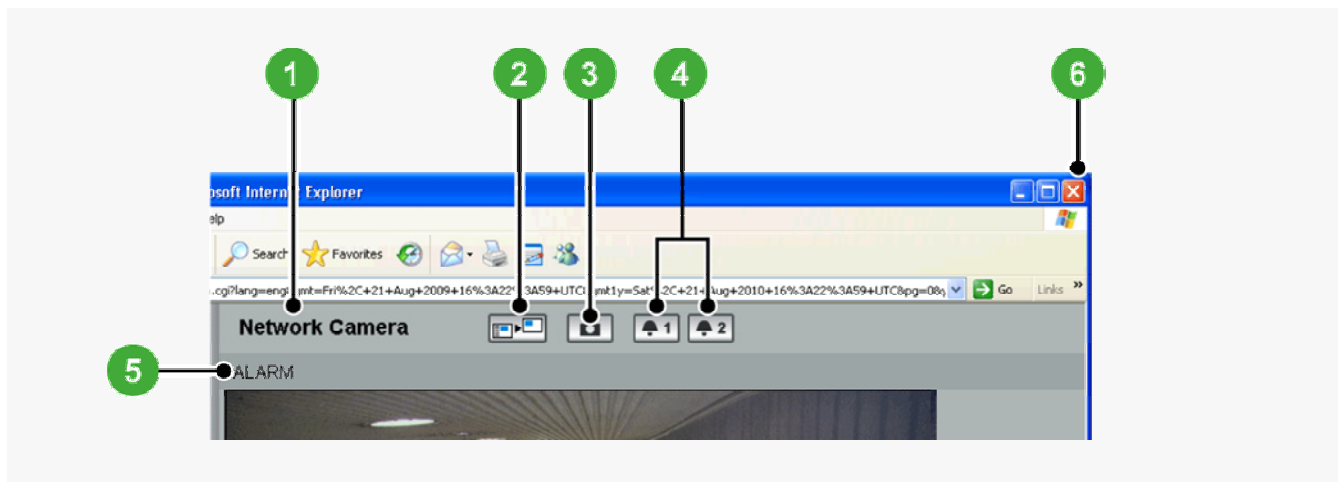


SIZE

The available options vary depending on your selection in [ASPECT RATIO] and your image/video compression format (JPEG/H.264).

- ▶ **JPEG (16:9):** 1920x1080, 1280x720, 1024x576, 640x360
- ▶ **JPEG (4:3):** 2288x1712, 1600x1200, 1280x960, 1024x768, 800x600, 640x480, 320x240
- ▶ **H.264 (16:9):** 1920x1080, 1280x720, 640x360, 320x180
- ▶ **H.264 (4:3):** 1600x1200, 1280x960, 1024x768, 640x480, 320x240

Tool panel



1 Camera Title

Shows the camera title you configured in [TITLE] on the CLOCK SETTINGS screen. The default camera title is "Network Camera".

The color of the camera title changes depending on the alarm state as follows:

Gray: Normal state

Red: Alarm condition is being detected.



When the camera title is shown in red, no other alarm signal will be received.

2 Full Screen Button ()

Click this button to hide the control panel and the tool panel, and enlarge the video display to the maximum display area of the screen.

Clicking the button again restores the normal screen.

3 Capture Button ()

Click this button to capture the desired scene of the JPEG live streaming as a still image in a separate window. You can then save and print the captured image.

For details, refer to the "Printing and Saving a Still Image" section.

4 Remote Alarm Buttons ()

You can use these buttons to output an alarm signal from the camera.

For details, refer to the "Sending a Remote Alarm Signal" section.

5 [ALARM] Indication

The color of the letters changes to orange when an alarm is detected.

6 Close Button ()

Click this button to disconnect your PC from the camera and close the browser window.

Printing and Saving a Still Image

You can capture and then save or print the desired scene of the JPEG live streaming during monitoring.

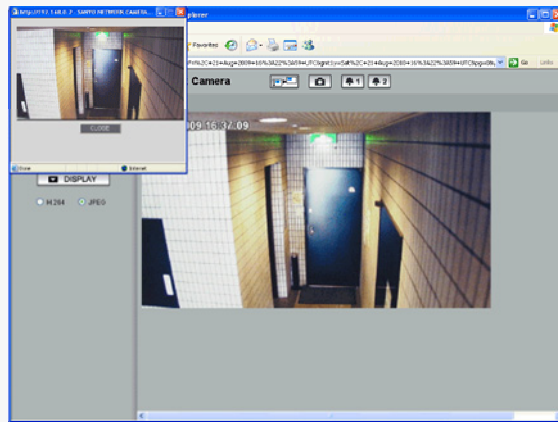
1 Click the Capture button on the tool panel.

The captured still image appears in a separate window.



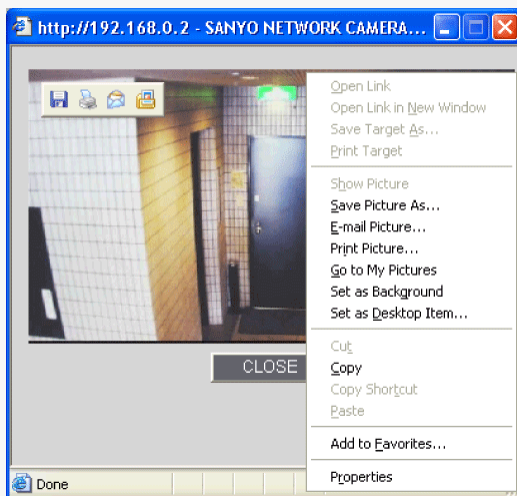
This button is not available when you are monitoring H.264 video.

When a captured still image is shown, the live screen continues to display moving images in the video display area.



2 Right-click on the captured still image and, in the context menu, select the command (Save Picture As/Print Picture).

In the dialog box that opens, specify the printing/saving conditions and then execute the command.



3 Click **Close**.

The window showing the captured still image closes.

Sending a Remote Alarm Signal

Use the Remote Alarm buttons provided on the live screen to send alarm signals from the camera's alarm output terminals.



Required operation privilege: admin, operator1, operator2

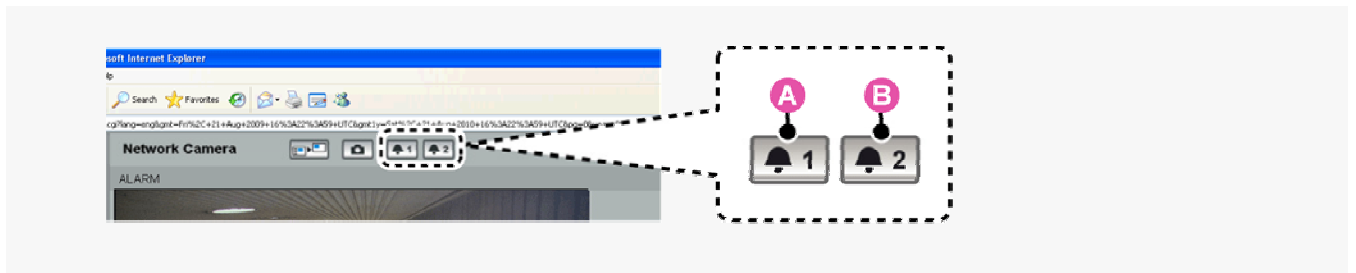


To use the remote alarm buttons, you must set in advance [ALARM OUT] to "REMOTE" and [ALARM OUT TIME] to the desired duration on the ALARM SETTINGS screen (administrator configuration menu).

1 Starting alarm signal output

Click one of the remote alarm buttons (shown in gray). The button turns orange and an alarm signal is output from the corresponding terminal.

If the camera is connected to a buzzer or other external device, you will hear an alarm sound from that device.



▶ **A** : Click this to send an alarm signal from the ALARM OUT1 terminal.

▶ **B** : Click this to send an alarm signal from the ALARM OUT2 terminal.

2 Stopping alarm signal output

The way you stop alarm signal output differs depending on the [ALARM OUT TIME] setting on the ALARM SETTINGS screen.

Automatic Stop

The automatic stop method is applied if you have specified an alarm output duration in [ALARM OUT TIME]. When the set output duration has elapsed, the camera stops sending the alarm signal automatically and the button returns to white.

Manual Stop

The manual stop method is applied if you have selected "CC" in [ALARM OUT TIME].

Click one of the remote alarm buttons shown in orange. Then, the camera stops outputting the signal and the button returns to white.